

Scranton Attendance Center  
Preschool Newsletter  
August/September 2023

WELCOME BACK  
TO SCHOOL

**A MESSAGE FROM SAC STAFF**

We have thoroughly enjoyed these last few weeks of getting to know our youngest CHARGERS! All of the preschool classrooms have been working on getting to know each other, building relationships as well as learning how to do school. Everyone has been doing a great job! Preschool is the foundation to your children's first formal years of learning. A great partnership with families is an integral part of that foundation and we look forward to working with you all this year. Please don't hesitate to reach out to us with any questions or concerns.

**IMPORTANT LINKS**

[ASQ Information](#)

[District Calendar](#)

[School Messenger](#)

[SeeSaw App Download](#)

**ARRIVAL PROCEDURES**

1. School starts at 8:00 am and 12:15 pm
2. Please be sure to have your child at school before start time to avoid interruptions to the day.
3. Late arrivals must sign in at the office and be brought back to class by a para or teacher.

**IMPORTANT DATES**

- 9/4: No School- Labor Day
- 9/18: No School- Professional Development
- 9/20: SAC Family Night 4-6pm

**FRIENDLY REMINDERS**

- Set up your SeeSaw App to communicate with teachers
- Complete the ASQ
- Review the district calendar on the district website
- Please DO NOT drive through the gates during bus pick up and drop off. The front parking lot is for employees only. You may use the parking lot to the south of the school.
- Stay informed and sign up for text and emails through school messenger
- If your child is illness please use THESE GUIDELINES to prevent the spread of illness



# MEET OUR PRESCHOOL STAFF



Julie Flory



Rebecca Parkhill



Donna Prettyman



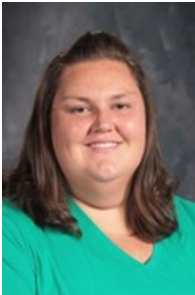
Dana Workman

**Meet our AMAZING classroom  
Teachers and Para  
Professionals at Santa Fe Trail  
Preschool**

*Inspiring and Empowering Every Charger, Every Day*



Cindy Finlay



Amber Gist



Chris Sells



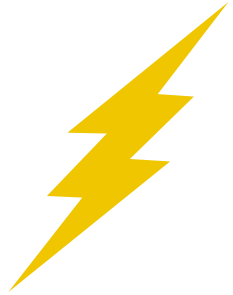
Caelyss Moore



Sandy Sleichter



Cheyenne Barr



**Related Services are the Experts  
meeting all early childhood  
developmental needs**

**Three Lakes Educational Cooperative**

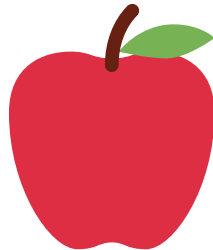
**Speech and Language, Autism, Occupational  
Therapy, Physical Therapy, Nursing, School Psych,  
Social Worker**



Betsy Kraus



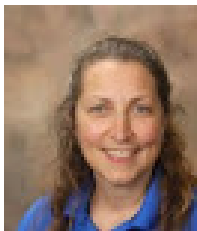
Kelly Courtney



Jessica Collins



Brooke Markey



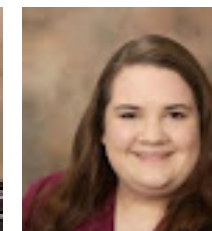
Tammy Miller



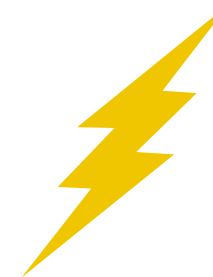
Amy Redmon



Adrian Proctor



Lauren Fager



## Administration and Support Staff



Kaitlyn Ball



Doug Lester



Greg Sheets



Robert Madden



Maggie Mead



Janine Henry



Faith Flory